

DODDS & SHUTE B CORP PRODUCT CATALOGUE

Certified



Corporation



DODDS & SHUTE B CORP PRODUCT CATALOGUE



WHO WE ARE

We are a design-led procurement company, dedicated to sourcing the most sustainable furniture and lighting. We have been a certified B Corp since 2022, recognising our commitment to work with manufacturers making products that don't cost the earth and that support people.

WHAT IS B CORP?

B Corp certification recognises companies that uphold rigorous standards across governance, social responsibility, and environmental impact. It also requires a legal commitment to considering all stakeholders and operating with transparency and accountability. Certified businesses are reassessed every three years, reinforcing a culture of continual improvement and long-term sustainability.

We're proud to stand alongside more than 2,000 UK companies that are part of this growing movement, using business as a force for positive change.

B CORP MONTH:

March is B Corp month! It's an annual campaign to celebrate B Corp - the purpose to use business as a force for good and the companies operating to the robust standards. We work to promote B Corps manufacturers making furniture in a better way, and want to spread the word.



Fredericia

FREDERICIA

Fredericia is a family-owned Danish furniture brand established in 1911, renowned for crafting high-quality, durable Scandinavian design, including iconic pieces by Børge Mogensen and Nanna Ditzel. As a certified B Corp, they emphasize sustainability, natural materials, and timeless aesthetics meant to last for generations, with production facilities in Denmark.



THE SPANISH CHAIR



J39 MOGENSEN CHAIR



CALMO



ISLETS



SEQUOIA POUF



RAWSIDE

Rawside's range of furniture is created to be as sustainable, practical, and durable as possible. Our carefully sourced materials and finishes give our standard range a non-standard aesthetic.



ARNE



DESK END



FRANK & NAZ



FLX



BASS



Andreu World

ANDREU WORLD

Andreu World is a Spanish furniture manufacturer founded in 1955. Known for expert woodworking and bentwood techniques, the brand collaborates with renowned designers to create durable, eco-friendly, and modern designs that blend comfort with sophisticated, clean aesthetics.



LIECO



AFUERA



ORU CHAIR



BOLETE



REVERSE OCCASIONAL TABLE



FLOOR_STORY

FLOOR_STORY is a design-focused rug company known for its innovative collaborations and commitment to ethical practices. They blend contemporary design with traditional craftsmanship, supporting artisan communities while maintaining high standards in sustainability and transparency.

CHEVRON



VERSO



SELVAGE



CHAMOMILE



SELVAGE



CYNARA



modus

MODUS

At Modus we take a life cycle thinking approach to product development, applying material intelligence and design understanding to all the pieces in our collection, helping us develop low impact workplace furniture for a better future.



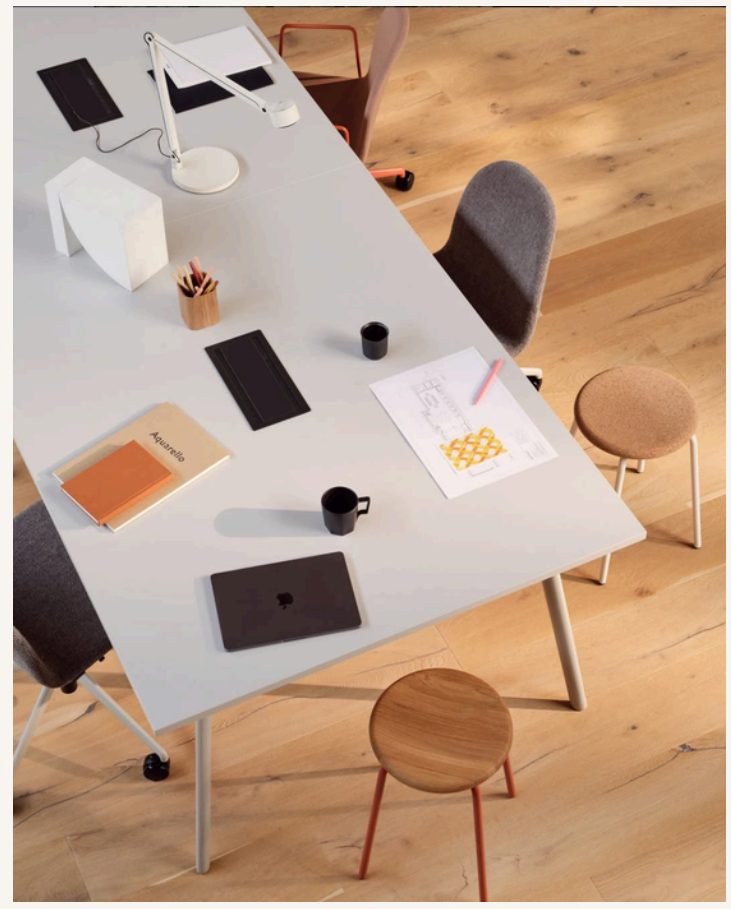
BOB



ARBOUR



PANDA



MIX



BALANCE



CLIMB



ASTEP

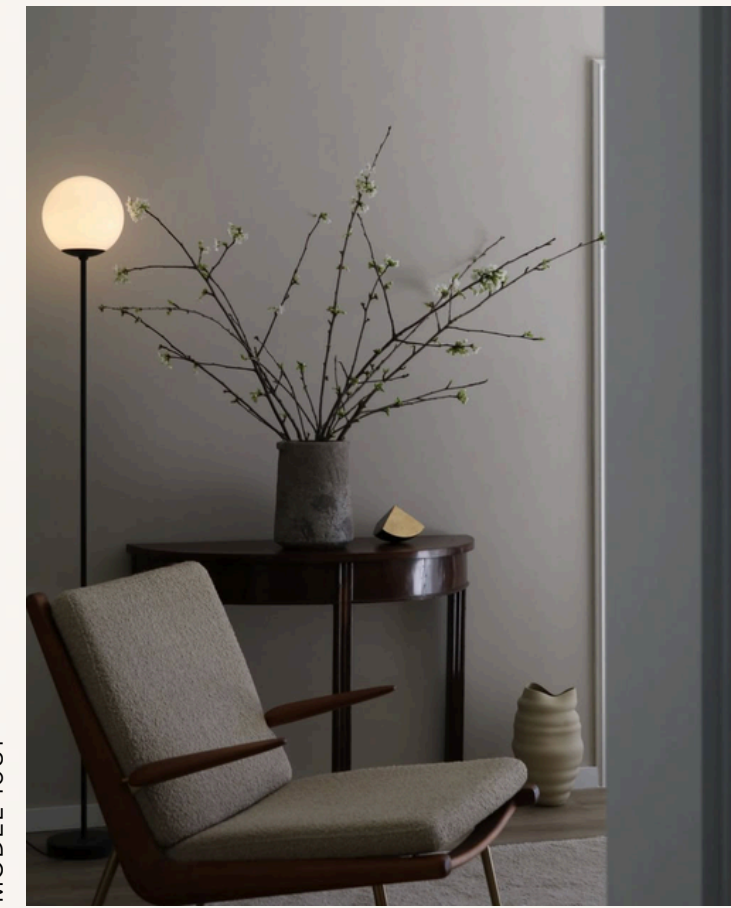
Astep, Timeless inventions

Founded in 2014 by Alessandro Sarfatti, Astep creates timeless designs that blend past familiarity, present relevance, and future innovation, with a commitment to circular design - crafting products built to last, be loved, repaired, and only recycled as a last resort.

MODEL 2055



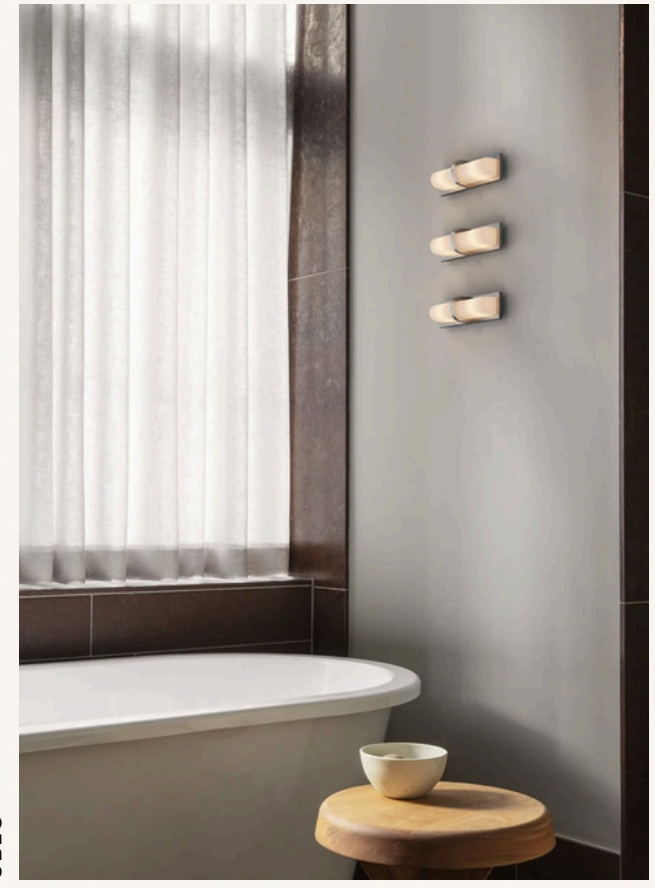
MODEL 1081



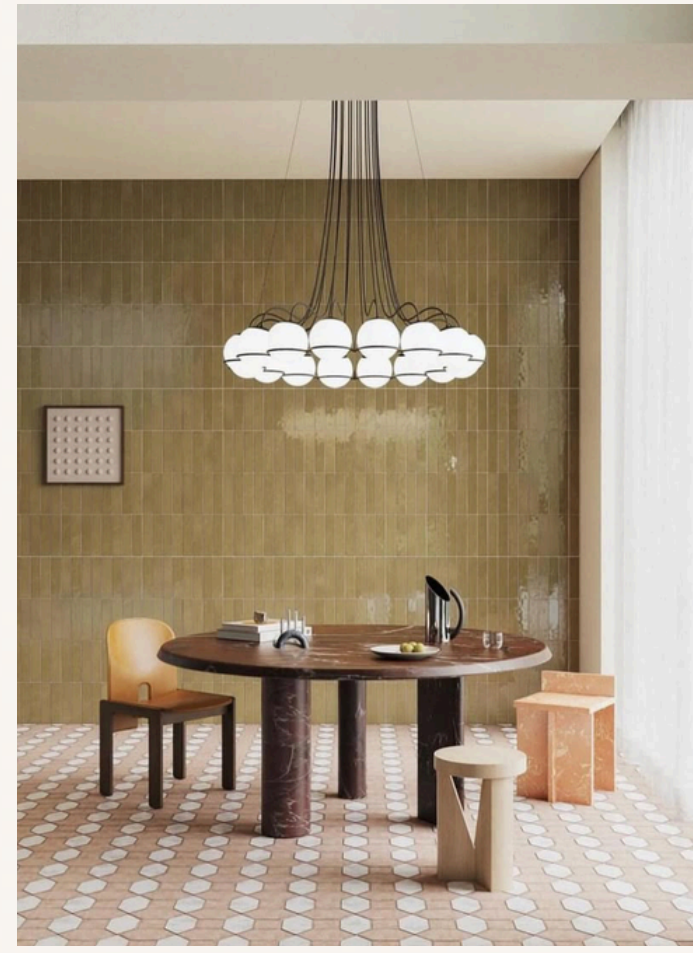
SORPRESA



UBLO



LE SFERE CHANDELIER



LILLE





ANOTHER COUNTRY

Designs for the Natural Home.

Since 2010, our mission has been to create sustainably-made furniture that balances craft and industry, inspired by timeless forms from British Country kitchens, Shaker, Scandinavian, and Japanese woodwork, reinterpreted for the modern customer.

DINING TABLE FOUR & STOOL 3



MODERN FARMHOUSE OCCASIONAL CHAIR.



SLOW ARMCHAIR



HARDY COLLECTION



ANOTHER SOFA & PURBECK COFFEE TABLE



GOLDFINGER

Goldfinger Design is an award-winning B Corp and social enterprise showing the world that high-end design can and should be planet and people positive. Goldfinger crafts bespoke and made-to-order furniture from sustainable timber and materials, diverting waste from landfill and reducing carbon emissions.

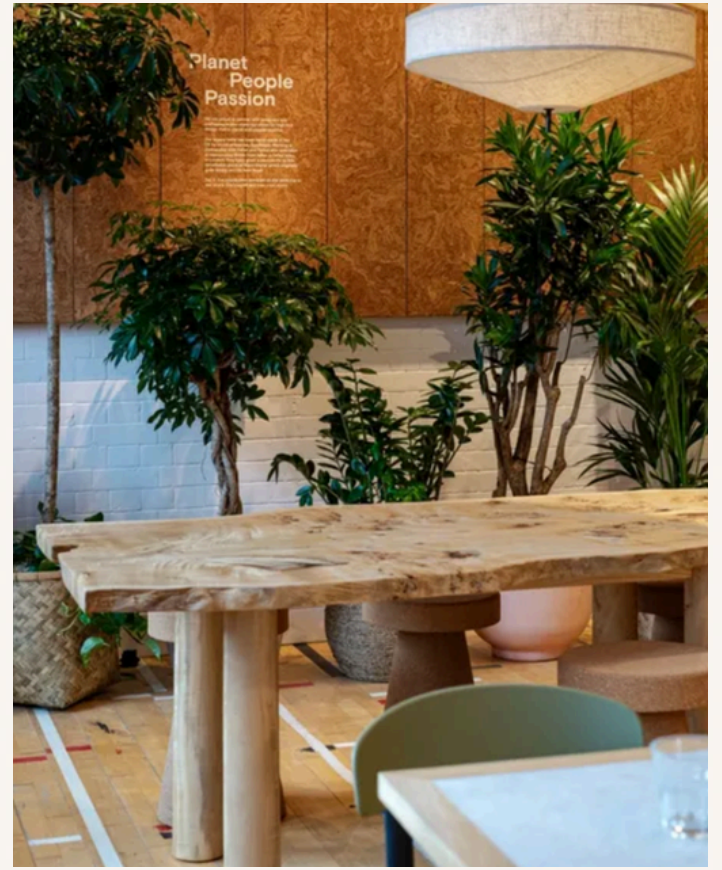
INHABIT OBLONG COFFEE TABLE



AYRTON COLLECTION



TREECYCLED BLACK POPLAR DINING TABLE



VALE CHAIR



BOWER COFFEE TABLE



INHABIT CURVED COFFEE TABLE

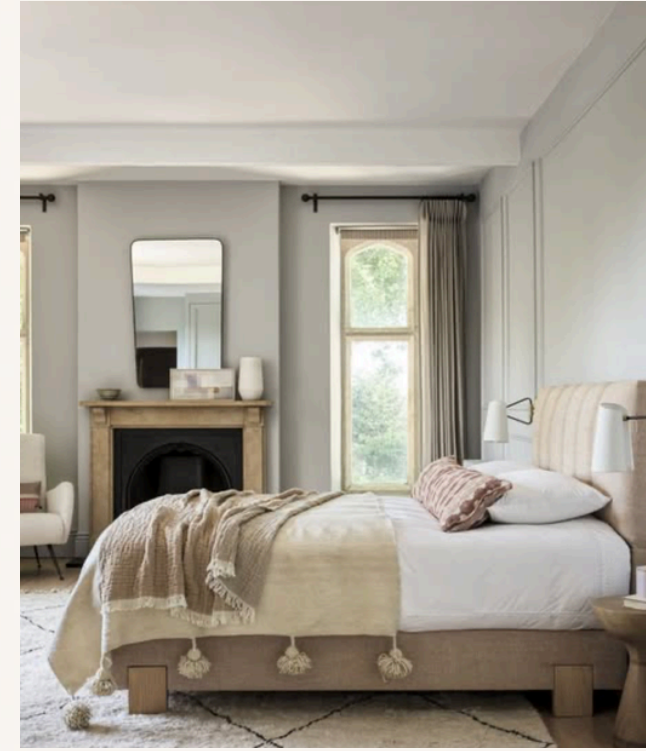


NATURALMAT

Naturalmat have been handcrafting organic beds, mattresses and bedding using natural materials from their Devon workshop since 1999.



EBFORD BED



LYDFORD BED



HALSTOCK BED



GREAT TORRINGTON BED



DARTMOUTH BED



OTTERTON BED



tala.

TALA

Tala, founded in 2015 by three friends from Edinburgh University, combines design, engineering, and sustainability to create low-carbon, design-led lighting that's gentle on the planet and brightens homes.



ALUMINA



KILTER WALL LIGHT



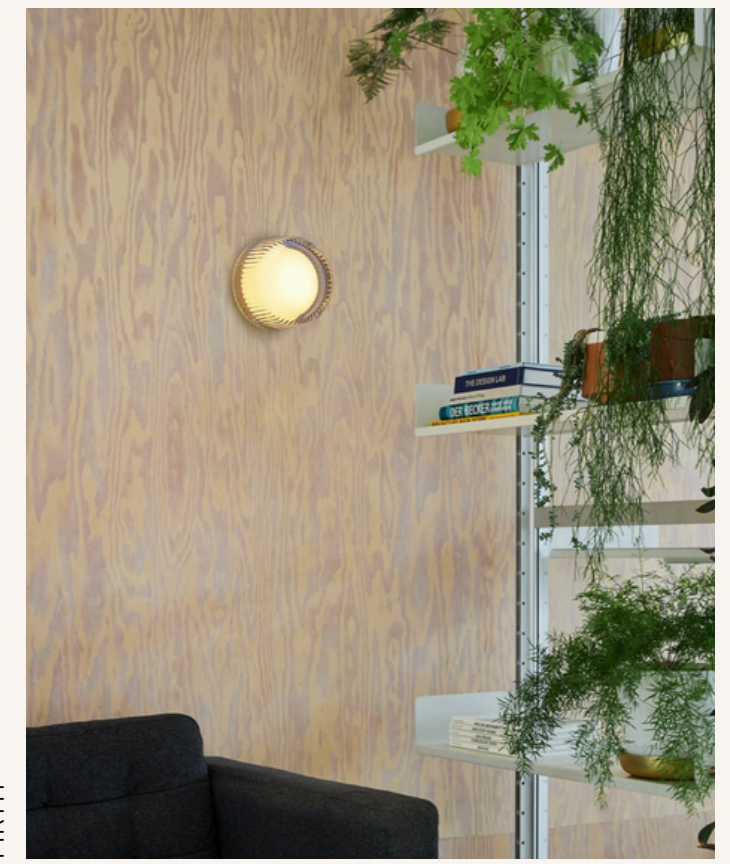
SYCAMORE



ECHO CHNADIELIER



THE MUSE PORTABLE LAMP



FIRTH



HUMANSCALE

Humanscale is the leading manufacturer of ergonomic office tools. Their award-winning designs are created with simplicity and performance in mind and are developed alongside ergonomic experts.



LIBERTY CHAIR



FREEDOM SADDLE STOOL



FREEDOM CHAIR



SEDEO STOOL



FLOAT MICRO



PATH CHAIR

Image Courtesy of Room & Board



**ALONE WE ARE
A B CORP.**

**TOGETHER WE
ARE GEN B.**



For more info get in touch!
hello@doddsandshute.com